

Epson Stylus Pro 7900 - matte black (MK)

A General Guide for Printing on Hahnemühle FineArt Papers

Installing Profiles

Please refer to your printer manual for a detailed instruction how to install profiles for your printer.

Note: Your graphic-application needs to be restarted if it was open when profiles were installed. New profiles will be detected automatically during the start of the application.

Settings

Print drivers will vary from printer to printer and from Macintosh to PC but the general setup will be the same. Be sure to select the proper profile for the printer, paper and ink combination you are using. In our profile names you will find the proper combination to use.

Example: Your Profile name is "HFA_Eps7900_MK_PhotoRag".

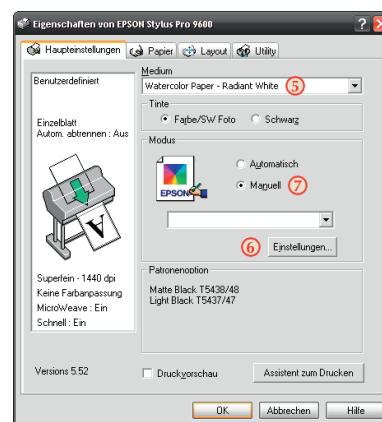
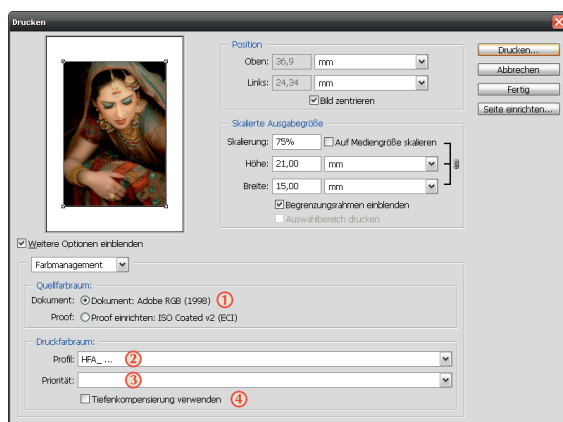
You can see that you are using a Hahnemühle Profile (HFA) for the Epson 7900 (Eps7900) which is to use with matte black (MK) on Photo Rag.

Print with Preview / General Settings:

- 1) Source Space: Document
- 2) Profile: regarding to your paper and ink combination
- 3/4) Rendering Intent and Black Point Compensation: Needs to be chosen regarding to the image you're using. Eventually you need to test. No recommendation possible.

Print Driver / Media Settings:

- 5) Media: Velvet FineArt Paper
- 6) Quality: 4 (1440 dpi)
- 7) Mode: Userdefine - Colormangement Off



Note: For traceable printing, please save the settings and recall these settings whenever you print. Varying these settings could affect the outcome of your image. There are other factors that can also affect the output, if needed please refer to your printer manual or image manipulation program for additional color management issues. The screen shots may vary in case of different systems.